

SAINT MARY'S PRIMARY SCHOOL

GLOSSOP



OFFICIAL OPENING

13th June, 1970

Saint Mary's Primary School

GLOSSOP

*Founded 1853*



SOLEMN BLESSING

*by the*

RIGHT REVEREND EDWARD ELLIS, D.D.

*Bishop of Nottingham*

OFFICIAL OPENING

*by*

SISTER MALACHY JOSEPH, M.A., D.C.P.

*Mother General of the Sisters of Charity of Saint Paul*

Saturday, 13th June, 1970





## THE BLESSING OF A NEW SCHOOL

*Peace be to this House,  
And to those who dwell herein,  
Our help is in the Name of the Lord,  
Who made Heaven and Earth.  
The Lord be with you,  
And with thy spirit.*

## LET US PRAY

O LORD JESUS CHRIST, Who didst command Thy Apostles to invoke the blessing of peace on any house they entered, sanctify we beseech Thee, this house built for the training of our boys and girls. Pour forth upon it the fullness of Thy Blessing and Peace. Let that fullness be for them a means of salvation as it was for the house of Zacheus when Thou didst enter it. Bid Thy Angels watch over it and repel from it every assault of the enemy. Fill the teachers with the spirit of knowledge, of wisdom and of Thy fear. Grant to the pupils grace from above, that, whatever they are taught, they may grasp with their minds and ever recall and practise. May all those who dwell herein, by leading a life of virtue, please Thee and deserve one day to be received into the everlasting abode of Heaven, through Thee, Jesus Christ, Saviour of the world, Who livest and reignest God for ever and ever.

Bless, O Lord, this building, that health and holiness, strength and glory, humility, goodness, mildness, gentleness, fidelity to Thy Law, obedience and gratitude to God the Father, Son and Holy Spirit may abide here. May this Blessing fall upon this building and its surroundings, and the sevenfold grace of the Holy Spirit descend on all who assemble, teach and study here, through the same Christ Our Lord.



## MONSTRA TE ESSE MATREM



MURAL PRESENTED BY PAST AND PRESENT PUPILS





## FOREWORD

### RIGHT REVEREND EDWARD ELLIS, D.D.

It is a singular achievement for three new schools to be built within a short space of time in one parish. This is what Canon Baldwin has done at Glossop, St Mary's.

In congratulating and thanking him, and his parishioners, I want also to express my gratitude to the Department of Education and Science and to the Derbyshire Education Authority.

They have been most understanding in agreeing to the provision of a new school for the overspill from Manchester, while at the same time granting permission for the replacement of the old St Mary's by this present fine building.

May I also join in the thanks being paid to the Sisters of Saint Paul of Selly Park. They represent the hundreds, indeed over the years the thousands of women, who have given up all that the world counts dear to dedicate themselves entirely to the service of God's children.

May our Divine Lord and his Blessed Virgin Mother watch over, protect and prosper St Mary's School, and all who teach or are taught in it.

✠ EDWARD

*Bishop of Nottingham*

*Bishop's House,  
Nottingham.*



THE RIGHT REV. EDWARD ELLIS, D.D.

*Bishop of Nottingham*

To whom our affectionate and loyal greetings and gratitude  
our offered by the people of Saint Mary's Parish.





## SAINT MARY'S SCHOOL, Glossop

*Founded 1853*

The foundations of St. Mary's Parish and School were laid by Father Fauvel, a refugee Priest from France, who, in 1853 commenced the erection of St. Mary's School in St. Mary's Road at a cost of £1,300. In selecting for his school this site in the midst of the most thickly populated part of the town, he had a two-fold object in view. He intended it not only for a school, but that, for a time at least, it should serve as a chapel where Holy Mass might be celebrated each Sunday. He had hopes of the erection of a large and noble church for this part of the town, and he was encouraged in this by the promise of a very large donation from a generous hearted friend. But in 1861 the cotton famine struck Glossop, bringing sorrow and desolation to thousands of the people, and Father Fauvel had to abandon his ideas of building.

In 1882 conditions in the town had improved and by the generosity of Francis Sumner, St. Mary's magnificent church was built and Father Tasker became the first Parish Priest. For nearly thirty years therefore, St. Mary's School was used as a Chapel where Holy Mass was celebrated every Sunday. For another eighty years, it was the only School in the Parish for all its children.

**THE SISTERS AT ST. MARY'S**

The Sisters of Charity of St. Paul the Apostle have long been associated with St. Mary's School. The Community was founded in Chartres in France in the 17th



ST. MARY'S SCHOOL—1853-1969

century. It was in 1848 that they first came to England and settled in Banbury, Oxfordshire, before moving to the present Mother House at Selly Park, Birmingham.

As early as 1853, only five years after settling in Banbury, the first Sisters came to Glossop. They founded St. Paul's Convent, Old Glossop, working in the parish and teaching in the school. From there, the Sisters came to teach in St. Mary's School. During this time, St. Joseph's Convent, Hadfield, was opened in 1861, and St. Mary's Convent on 1st May, 1876, so that in six years' time we shall be celebrating the centenary of their coming to the Parish.

**EARLY DAYS**

St. Mary's School was flourishing long before education became compulsory and free, and there are many references in the Log Book of school fees for those days.

Between 1887 and 1969 many were the alterations and improvements that went on, trying to make the old building as useful and as comfortable as possible. In 1950 a "Horsa" hut (the pre-fab) was erected and there was the beginning of secondary school education, since from then onwards the 14+ children from All Saints and St. Charles completed their education at St. Mary's. In 1956 St. Mary's first pupils were entered successfully for the "O" level G.C.E. The building of Blessed Philip Howard School was commenced in 1960 and ready for its first pupils in 1961, so that the tradition already established in St. Mary's of entering Pupils for "O" level was continued.

In the Parish since then, in 1968, St. Margaret's Primary School was opened for the children of the new Estate at Gamesley, as well as for the children of Broadbottom, Charlesworth and Chisworth, who previously had attended St. Mary's School.

In 1966 St. Mary's School had more Pupils on the roll than when it was an All-age School, so that during the past 15 years various huts and buildings were added to accommodate the Pupils. Before it was evacuated in 1969, the Pupils used, in addition to the "Pre-fab", the Pavilion or "Black-hut", the Canteen hut and the room at the end of the Canteen; four odd buildings scattered over the fields! For a short time the Sunday Schoolroom of Littlemore Chapel was used, with patient endurance!

**GOODBYE TO ST. MARY'S**

July 18th 1969 was the last day in the old School of St. Mary's. All the pictures and charts were taken down, and the scars of the old building stood revealed. Books and apparatus were packed and it was a sad and lonely feeling that pervaded the School. The Staff and Pupils joined Canon Baldwin in a Mass of Thanksgiving in St. Mary's Church for the New School, and special prayers were offered for all the Sisters, Staff and Children who had joined together in the past to make St. Mary's a happy School, and a heartfelt plea went up to Our Blessed Lady that the tradition started so many years ago would carry on to the New St. Mary's.

Long before 1963, the Education Authority had been approached on various occasions concerning a replacement for St. Mary's School which was now 110 years old and quite inadequate. In 1964 we were optimistic enough to start searching for a site for a school—a difficult task in the hilly district of Glossop. A site, however, was found in Gladstone Street which was quite central for the primary children of the Parish.





Throughout the year 1965, the very out-of-date conditions of the School were continuously stressed and the urgency of a replacement made clear; but it was also made clear to us that the Ministry of Education was not likely to consider giving it a place in any building programme in the foreseeable future.

In the autumn of 1965, an official request was made by the Diocese for a replacement for St. Mary's School, after the grim conditions at the School had received still more publicity and had been investigated by the Education Authority. A new school for St. Mary's was, therefore, included in the list sent to the Department of Education by the Local Authority for their consideration.

Then finally, came the good news in July 1966 that this project had been included in the 1967-68 Building Programme.

#### A NEW ST. MARY'S AT LAST!

The site of six acres in Gladstone Street was reserved for St. Mary's School in January 1966 by the Local Authority. The acquisition of this site was made easy for us by the owner, Mr. Webster, and by the assistance of the Borough Council, to whom we are very grateful. It was a difficult site making the positioning of the school by the Architects a real problem, but it would have been less of a problem, and the general appearance of this first new primary school for the town, would have been much improved if we had been able to acquire the adjoining land taken up by a few unused allotments. It was not until April 1967 that access to the site was obtained and trial holes were able to be made for sub-soil survey. The remainder of the year 1967 was spent in preparing plans, costs and tenders, and a start could have been made in



THE PAVILION, or 'BLACK HUT' USED BY A JUNIOR CLASS



December 1967. But in January 1968 the Government squeeze came and a stop declared on all school building not started by April. Final approvals were delayed and there was a real possibility of the new school being postponed indefinitely. This would have been a great disappointment after so much preliminary work, efforts and anticipation. However, efforts were made by good and powerful friends in and outside the Diocese, with the happy result that permission to go ahead was at last received in May 1968. The Cutting of the First Sod took place on May 10th and the Builders were on the site on June 10th. The Foundation Stone was laid on September 22nd, 1968, by Canon Baldwin and the happy and fortunate Pupils took possession of their New St. Mary's School in September, 1969.

#### NO EFFORT SPARED

Since this new School meant so much to St. Mary's Parish, no effort was spared to make it most attractive and pleasing. Being some distance from St. Mary's church, it was decided to add a small Chapel or Oratory. This is at the entrance to the Junior Block and contains a beautiful carved wood statue of Our Lady. Here the pupils have an opportunity for a few quiet prayers in their spare moments.

Also a large very attractive multicoloured mural of Our Lady surrounded by a circle of children and their pet animals, decorates the wall at the head of the stairs near the entrance to the Hall. This was made by Messrs Angus of Glasgow, and presented to the School by past and present Pupils.

At the entrance to the Junior Block, a stainless steel map of the "Top of the World" designed by Canon Baldwin gives the distance in miles by air from Glossop to the more important cities of the northern hemisphere, set by compass to give correct direction and location of each city. This is a constant source of interest and appeal to the Pupils.

Inter-com connects all the classrooms with the Headmistress' room.

In the grounds outside the Junior Block, a covered area provides a playspace for the children on wet days.

At the main entrance to the School grounds are the wrought iron gates which were originally the gates to St. Mary's church. Each gate is painted blue and has the 'Ave Maria' monogram picked out in gold. All this greatly adds to the pleasing appearance of the School from the road.

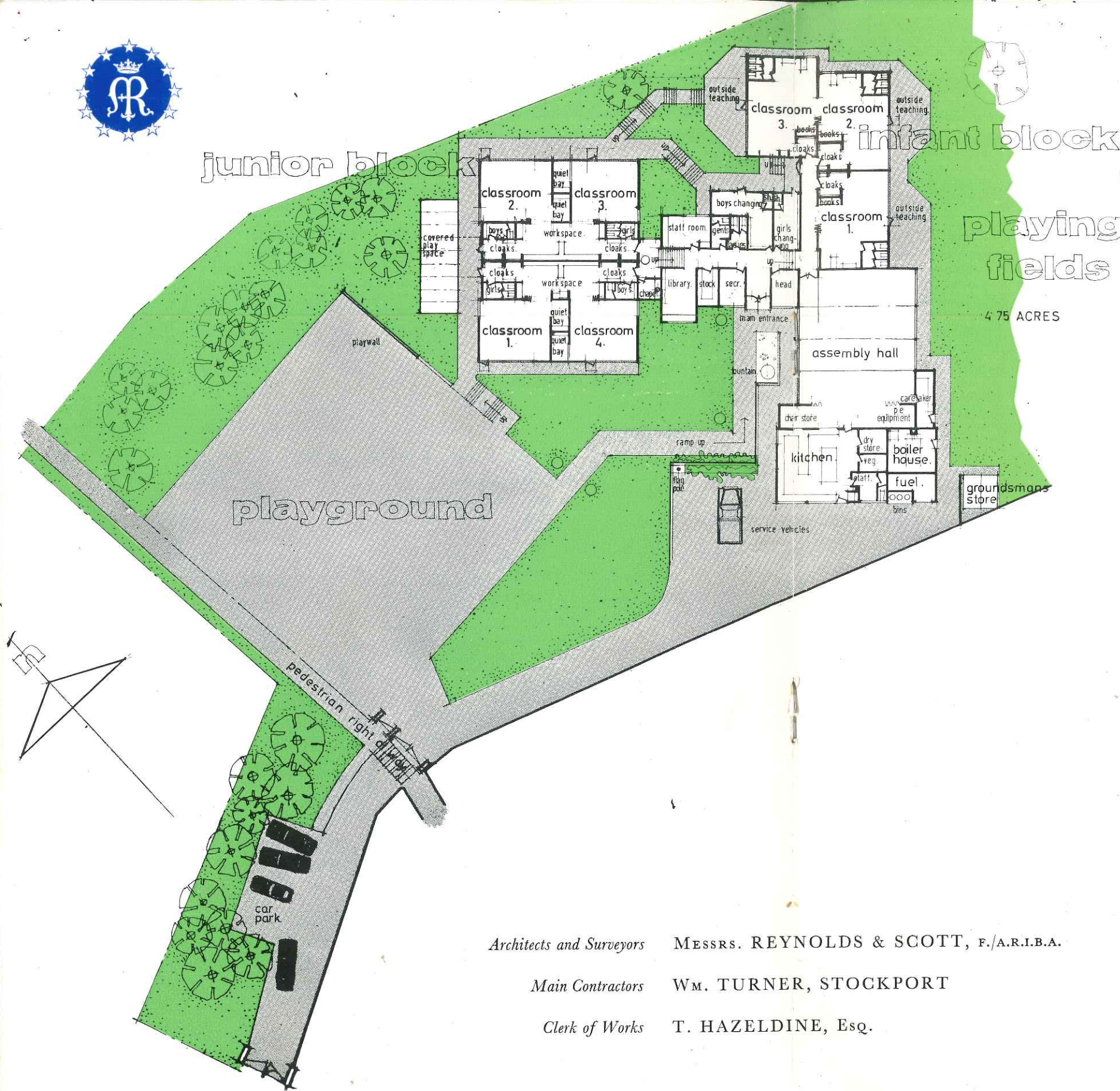
The School was designed and planned by Messrs. Reynolds & Scott, Architects & Surveyors of Manchester and they deserve the highest praise for this successful planning on a very difficult site. The construction of the School was carried out by Messrs. Wm. Turner of Stockport, and their excellent work merits the praise and admiration of all who see the School.

Grateful tribute must be paid to the Derbyshire Education Authority for the excellent and up-to-date equipment so generously provided throughout the School.

The greatest praise, however, is due to the people of St. Mary's Parish who have completed in a few years their third new school in the Parish, and for the Borough of Glossop. These three schools have cost a total of well over £320,000, and have left the Parish with a 30 year debt of £50,000. This has been for the people a work for God and for the children, present and future of the Parish, and this thought, and the admiration which the Schools attract from everyone, is sufficient reward for all their work and sacrifices.

CANON A. BALDWIN





## ST. MARY'S PRIMARY SCHOOL

### THE NEW ST. MARY'S PRIMARY SCHOOL

has been built to replace the old school in St. Mary's Road which was founded in 1853. The new school is sited on a hillside which has presented many design problems as also has the severe exposure of the site and the Glossop climate.

In the earliest designs, weather conditions and exposure influenced the shape of the building, its heating system, and the detailing of windows and doors etc. A covered playspace has been provided as a further consideration of the exposed nature of the site.

To afford maximum protection for children approaching the school, a pedestrian right of way has been established away from traffic hazards and this in future will be extended when the Local Authority acquire the necessary land and rights of access. This means that ultimately children will be able to reach the playground with the minimum of risk from vehicles. From the playground, paths lead up the slope to the Junior and Infant blocks and to the main entrance. Service vehicles follow a separate road to the kitchen and boiler house.

The Junior block consists of four classrooms which can be opened up to lead into two workspaces where pottery, gardening and handicrafts can be done in groups. The block contains its own stores, toilets and cloakrooms and has its own television and radio service and heating control.

The Infant block, consisting of three classrooms, is similarly self-contained and both blocks are connected to the Assembly Hall which is fitted out as a gymnasium and also serves as a dining hall.

The Chair Store and PE Equipment store are open planned screened by curtains and served by spot lights to allow dramatic work to be done.

Boys and Girls changing rooms are situated near the hall and also lead out to the playing fields. A shower cubicle is provided in each changing room.

The kitchen is fitted with LASMEC equipment and the heating system is a mixture of hot water radiators and fanned warm air from a solid fuel boiler.

A small Chapel is situated near the Junior Block for any children who wish to use this for private devotions during play times and lunch hours.

The building has cost almost £108,000 and took fifteen months to build.

Architects and Surveyors MESSRS. REYNOLDS & SCOTT, F./A.R.I.B.A.

Main Contractors WM. TURNER, STOCKPORT

Clerk of Works T. HAZELDINE, Esq.





ST. MARY'S NEW SCHOOL, 1969



INFANTS' ENTRANCE



Sinless Maiden lowly, Mary of Galilee;  
Gabriel now asks you Mother of God to be.

Happy Mother lowly, Mary of Bethlehem;  
Shepherds starward gazing, Magi join with them.

Valiant Woman lowly, Mary on Calvary;  
Standing by Her Son's Cross, all the world can see.

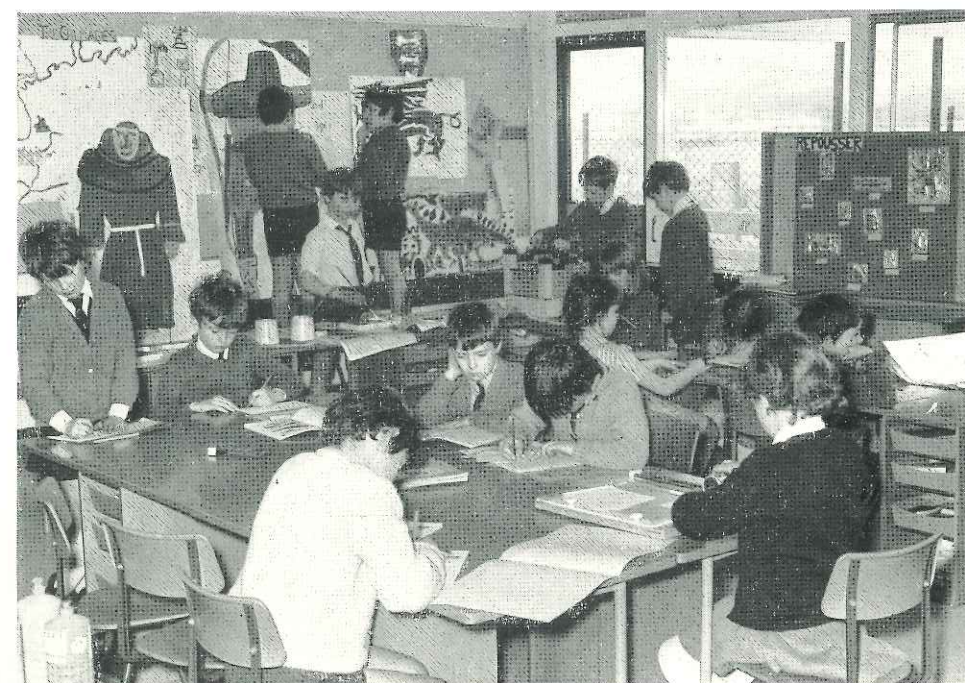




THE ADMINISTRATION BLOCK



THE SCHOOL ORCHESTRA



JUNIOR CLASSROOM





THE SCHOOL CHOIR



THE ORCHESTRA



THE LIBRARY



ASSEMBLY HALL AND GYMNASIUM





## ACKNOWLEDGEMENTS

The Staff and Pupils, the People and the Priests of St. Mary's will wish to pay a grateful tribute to Sister Paul Joseph, Headmistress, for the whole-hearted interest and zealous work for the welfare and success of the School and the children of the Parish. The crowded old St. Mary's, with the children dispersed in various huts over the landscape, presented countless problems, and a satisfactory establishment and settling in of the children in the new School required much previous planning and a massive operation when the time for the take-over came. The happy atmosphere in the school, its success academically and spiritually, is due to her.

Similarly, the devoted interest and unselfish work over the years of the Deputy Head, Miss Sarah Clegg, deserves everyone's deepest gratitude. The Church and School, her unfailing help with School fund raising, her delightful orchestra and other activities, are monuments to her unselfish and whole-hearted interest and devotion to Church and School.

St. Mary's people are to be congratulated on their beautiful new School and deeply admired for their generosity and faithful co-operation in all the Parish events which have helped to reduce the debt so considerably on our Schools. Three new schools is no small task for one Parish, yet in three or four years they have reduced their debt by over £20,000. The Parish rejoices over its new St. Mary's School and is proud of the children in it.

The very attractive Badge of St. Mary on the school uniform and in this book was designed by W. L. Williams of Nottingham to whom grateful tribute must be paid.



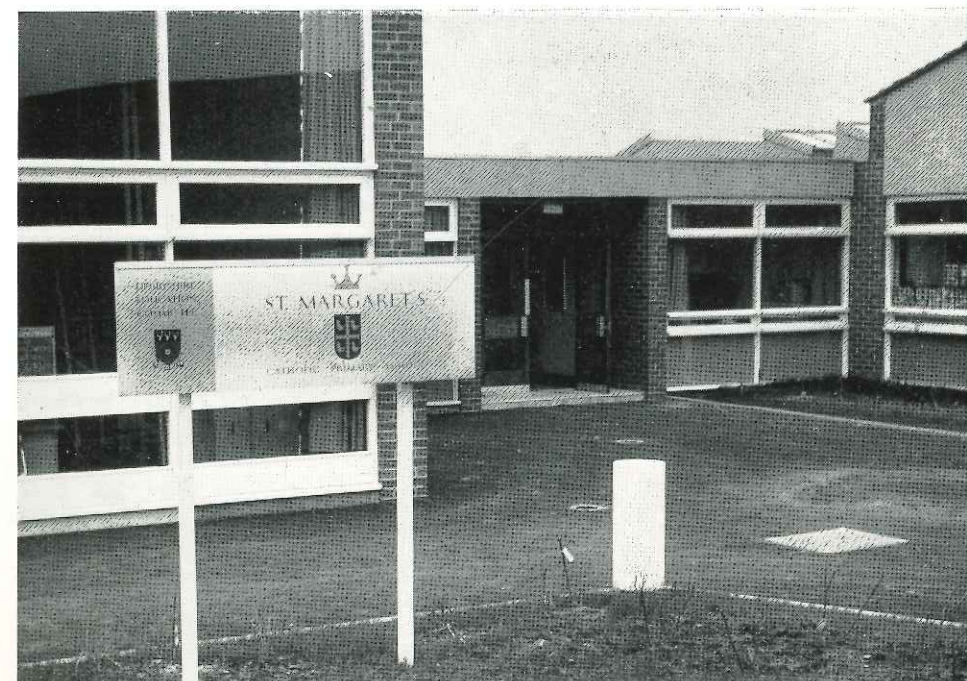
## PROUD ACHIEVEMENT by the PARISH of ST. MARY'S

*Three Schools opened in eight years*



ST. PHILIP HOWARD SCHOOL

*Opened 3 June, 1962*



ST. MARGARET'S PRIMARY SCHOOL

*Opened 28 June, 1969*



*Staff of*  
SAINT MARY'S PRIMARY SCHOOL

*Headmistress*  
SISTER PAUL JOSEPH

*Deputy Headmistress*  
MISS S. CLEGG

SISTER COLUMBA

MRS. M. REGAN

MRS. P. TOOLE

MR. G. SUTTON

MISS R. MEDCRAFT

MISS M. DOHERTY

MRS. P. POVER

*Secretary*  
MRS. E. WILLIAMS

*Welfare Assistant*  
MRS. E. McMYLOR