



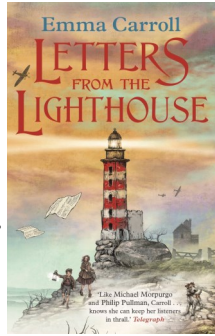
Saint Mary's Catholic Voluntary Academy

Ladybower Lent 2 Newsletter

Welcome back! Here's an overview of what we will be learning about in Ladybower this half term.

English

Letters from the Lighthouse



This half-term we will be looking at the historical context of this book and producing a range of different pieces of writing based on this story.

Diary entry

The children will be taking on the role of a child on the day Britain declared war on Germany. They will listen to the broadcast made by Neville Chamberlain and write a diary entry on what would have happened to them and how they would have felt on that day.

Instruction writing

The class will discuss and talk about war and what people might have needed. They will produce an instruction text on how to prepare for war.

Narrative

We will focus on the blitz scene from our story and the class will produce a piece of writing that captures the tension and atmosphere of the time.

Maths

Using White Rose Maths, we will be covering the following areas of learning;

Decimals

- Place value within 1
- Place value –integers and decimals
- Round decimals
- Add and subtract decimals
- Multiply and divide by 10, 100 and 1000
- Multiply and divide decimals by integers
- Multiply and divide decimals in context

Decimals, fractions and percentages

- Decimal and fraction equivalents
- Fractions as division
- Understand percentages
- Fractions to percentages
- Equivalent fractions, decimals and percentages
- Order fractions, decimals and percentages
- Percentage of an amount
- Percentages—missing values

RE

.Unity

'Why are we happiest when we are united?'

For Christians, communion has a significant meaning.

To receive communion means being in union with Jesus Christ and with one another. It means breaking and sharing the consecrated Bread which Catholics believe is the Body of Christ. To celebrate Eucharist means community.

Death & New Life

Can any good come out of loss and death?

For Christians, it is through Life, Death and Resurrection of Jesus that new life begins. He reveals the way to eternal life for us and so a new life begins here and now, a life which will culminate in future glory. The Lenten journey is one which takes us to the glory of Easter Sunday, from death to new life.



Saint Mary's Catholic Voluntary Academy

Ladybower Lent 2 Newsletter

Science

Light



During this topic, the children will:

- Recognise that light appears to travel in straight lines by investigating the angles of incidence and reflection
- Explain how we see things by light travelling in straight lines from the light source, to the object, then into our eyes
- Create a periscope and explain how it works
- Understand how mirrors reflect light and how they can help us see objects
- Investigate refraction
- Investigate how a prism changes a ray of light
- Investigate how light enables us to see colours
- Explain how shadows have the same shape as the object that casts them

History

World War 2

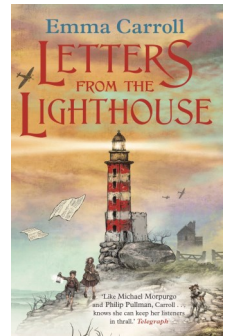
During this topic, the children will:

- Learn about the outbreak of WW2
- Understand what evacuation is and the effect it had on peoples' lives
- Understand what rationing is and why it was necessary
- Learn about the importance of the role of women during WW2
- Understand what The Holocaust was and the significant impact it had on the world
- Understand the key events of WW2



Guided Reading

In our Guided Reading sessions we will be looking at our focus text, **Letters from the Lighthouse.**



Set during WWII, we follow Olive and Cliff as they're evacuated to the coast of Devon after months of heavy air raids across London. A coded note links the disappearance of their sister Sukie to Devon, and Olive is determined to unravel the mystery.

We will be using the Reading Vipers techniques of vocabulary, inference, prediction, explain, retrieve and summarise to engage and understand the text in

How can you help?

This half term, the children in Ladybower will have **Tameside Active Dance** on a **Monday** and **PE** on a **Wednesday**.

Your child should be reading every night, please ensure that they are doing this and to write in their reading diary when they have done so.

Homework is set on a Monday and is due the following Monday.

Spellings are tested on a Friday, and a new list is given out on Fridays. Spellings can be accessed on Spelling Shed and the children's logins are in their reading diary.

Spelling Shed/Maths Shed - please ensure your child is accessing these regularly at home. It will help to embed their spellings and improve fluency particularly with times tables.