



Saint Mary's Catholic Voluntary Academy

Valehouse Lent 2 Newsletter

Welcome back Valehouse! Let's see what we're going to be learning this half term.

English

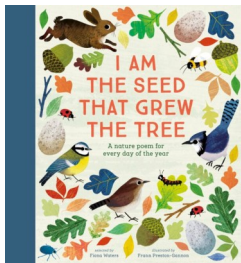
During this half term, we will be exploring the following genres and texts

The Night Gardener by the Fan Brothers

Using this wonderful text, Valehouse create eye-witness accounts of the amazing events that have been occurring on Grimlock Lane. As we continue through the story, the children will meet the mysterious gardener to create a new narrative about him and how he came to be the Night Gardener.



Poetry



We will explore poetry through the anthology 'I Am The Seed That Grew The Tree'. The children will explore how language can evoke emotions in the reader, and play with language choices for impact.

Maths

Using White Rose Maths, we will be covering the following areas of learning;

Length and perimeter

- Measure in metres, centimetres and millimetres
- Equivalent lengths (metres and centimetres)
- Equivalent lengths (centimetres and millimetres)
- Compare lengths
- Add and subtract lengths
- Measure and calculate perimeter

Fractions

- Understand the denominators of unit fractions
- Compare and order unit fractions
- Understand the numerators of non-unit fractions
- Understand the whole
- Compare and order non-unit fractions
- Fractions and scales
- Count and find equivalent fractions on a number line
- Find equivalent fractions as bar models

Mass and Capacity

- Use scales and measure mass in grams and kilograms
- Find equivalent masses (kilograms and grams)
- Add, subtract and compare mass
- Measure capacity and volume in litres and millilitres
- Find equivalent capacities and volumes
- Add, subtract and compare capacity and volume

RE

Catholic Social Teaching:

Rights and Responsibilities



This half term we will be exploring the theme of Rights and Responsibilities. Every person has a fundamental right to life. It is this right that makes all other rights possible. Everyone has the right to food, health care, housing, education and employment. We all need to strive to secure and respect these rights for others both locally and globally.

To Know You More Clearly:

Desert to Garden

In this branch of 'To Know You More Clearly', pupils will encounter the miracle of Jesus feeding the 5000, and focus on the second part of the Mass, the Liturgy of the Eucharist as a reminder of the Eucharist of the Last Supper.





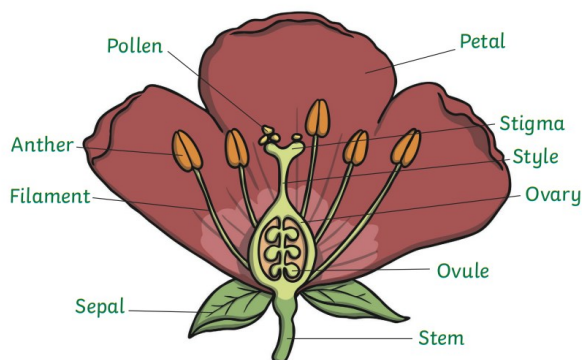
Saint Mary's Catholic Voluntary Academy

Valehouse Lent 2 Newsletter

Science

Valehouse will be exploring the big question **'Plants - what makes them grow and flourish?'** this half term. During this topic, the children will;

- Name and describe the functions of different parts of flowering plants and trees: roots, stem/trunk, leaves and flowers.
- Know the requirements of plants for life and growth (air, light, water, nutrients from soil, and room to grow) and how they vary from plant to plant
- Know how water is transported within plants
- Know the life cycle of flowering plants, including pollination, seed formation and seed dispersal, especially the importance of flowers.



Music

Valehouse will be identifying the key features of a ballad and performing a ballad using actions.

Computing

The focus in computing is data and information with children learning to create their own branching databases.

Guided Reading

Song of the River by Gill Lewis

Times are tough for Cari and her mum. A violent storm has flooded the valley where they live, destroying their home and café business.



Things seem bleak – but hope appears in the form of a plan to reintroduce beavers into the area, as the changes that these amazing animals make to the waterways might prevent another flood.

Cari knows that she must get involved. But with the project facing resistance from locals, can she convince them to give the beavers a chance – and will it be enough to save her home from being destroyed for a second time?

How can you help?

Please ensure your child brings a **healthy snack** and a **bottle of water** every day. Unfortunately the Government free fruit scheme is only open to infant children and we cannot depend on there being any left over.

Tuck shop is open on Fridays, with a selection of treats for 50p. Alternatively your child may bring in a cereal bar or crisps as their Friday treat.

This half term, the children in Valehouse will have PE on **Thursdays**, so will need to come into school wearing their PE kit (jogging bottoms are advisable due to the colder weather) and they will have swimming on **Tuesdays**. Please ensure they come to school wearing their swim suit under their PE kit to help with start time for the lesson.

Reading Diaries and reading books need to be brought into school every day, and we ask that care is taken that they are kept in a good, clean condition ready for another pupil to use. Please read with your child daily and sign their diary.

Homework is set on a Monday and is due the following Monday. Please ensure work is completed neatly and stuck in.

Spellings are tested on a Friday, and a new list is given out on Fridays. Spellings can be accessed on Spelling Shed and the children's logins are in their reading diary.

Spelling Shed/Maths Shed - please ensure your child is accessing these regularly at home. It will help to embed their spellings and improve fluency particularly with times tables.