



# Saint Mary's Catholic Voluntary Academy

## Valehouse Pentecost 2 Newsletter

Welcome back Valehouse! We've got a busy term ahead, so let's see what we'll be learning.

### English

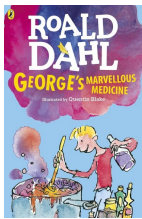
One person's disgusting is another person tasty! Using the texts 'The Disgusting Sandwich' and 'Which Food Will you Choose?' Valehouse will look at descriptive writing and persuasive writing.



### Poetry



We will explore and hone our performance techniques as we look at food poetry from 'Midnight Feast' and 'Pick and Mix'.



As we dive into Roald Dahl's George's Marvellous Medicine for our guided reading, we'll also be using it as a great stimulus for different genres of writing including creating our own potion descriptions, constructing dialogue between Grandma and George, character descriptions

### Maths

Using White Rose Maths, we will be covering the following areas of learning;

#### Time

- Roman numerals to 12
- Telling the time to 5 minutes and to the minute
- Read time on a digital clock
- Use a.m. and p.m.
- Years, months, days and hours
- Hours and minutes - start and end times and duration
- Units of time
- Solve problems with time

#### Shape

- Turns and angles, right angles and comparing angles
- Measure and draw accurately
- Horizontal and vertical and parallel and perpendicular lines
- Recognise and describe 2-D shapes
- Draw polygons
- Recognise, describe and make 3-D shapes

#### Statistics

- Interpret and draw pictograms
- Interpret and draw bar charts
- Collect and represent data
- Two-way tables

## RE

### Catholic Social Teaching:

#### Dignity of Workers

This half term we will be exploring the theme of Dignity of Workers. This theme explores the idea that everyone deserves to find something they are good at, and to feel important and needed. We will try to answer questions such as 'Why is it important for everyone to feel like they are needed?'



### To Know You More Clearly:

#### Dialogue and Encounter

In this branch of 'To Know You More Clearly', pupils will look at how Passover is celebrated by Jewish people in Britain today, and then recognise connections between some Islamic religious laws, beliefs, worship and life.





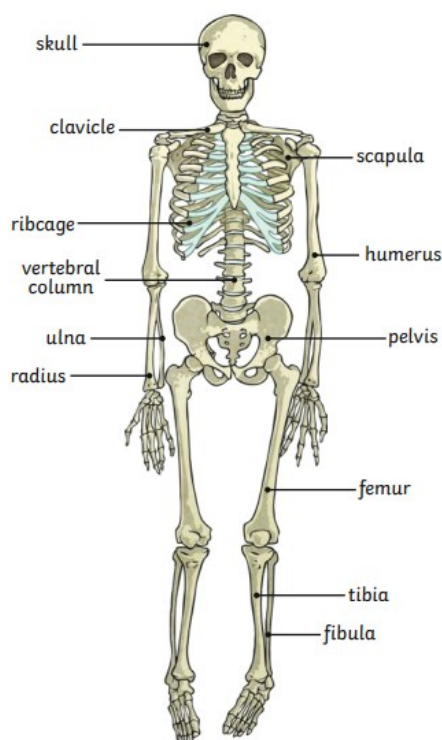
# Saint Mary's Catholic Voluntary Academy

## Valehouse Pentecost 2 Newsletter

### Science

Valehouse will be exploring the big question 'How can Usain Bolt move so quickly?' this half term. During this topic, the children will;

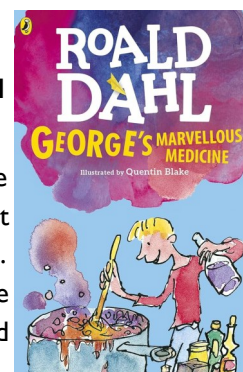
- Know that animals, including humans, need the right types and amount of nutrition.
- Know that animals cannot make their own food; they get nutrition from what they eat
- Know how nutrients, water and oxygen are transported within animals and humans.
- Know that humans and some other animals have skeletons and muscles for support, protection and movement



### Guided Reading

**George's Marvellous Medicine by Roald Dahl**

**WARNING:** DO NOT try to make George's Marvellous Medicine yourselves at home. It could be dangerous... George Kranky's Grandma is a miserable grouch. George really hates that horrid old witchy woman.



One Saturday morning, George is in charge of giving Grandma her medicine. So-ho! Ah-ha! Ho-hum! George knows exactly what to do.

A magic medicine it will be! One that will either cure her completely of her horrible grouchiness . . . or blow off the top of her head!

### How can you help?

Please ensure your child brings a **healthy snack** and a **bottle of water** every day. Unfortunately the Government free fruit scheme is only open to infant children and we cannot depend on there being any left over.

Tuck shop is open on Fridays, with a selection of treats for 50p. Alternatively your child may bring in a cereal bar or crisps as their Friday treat.

This half term, the children in Valehouse will have PE on **Thursdays**, so will need to come into school wearing their PE kit and they will have swimming on **Tuesdays**. Please ensure they come to school wearing their swim suit under their PE kit to help with start time for the lesson.

Reading Diaries and reading books need to be brought into school every day, and we ask that care is taken that they are kept in a good, clean condition ready for another pupil to use. Please read with your child daily and sign their diary.

Homework is set on a Monday and is due the following Monday. Please ensure work is completed neatly and stuck in.

Spellings are tested on a Friday, and a new list is given out on Fridays. Spellings can be accessed on Spelling Shed and the children's logins are in their reading diary.

Spelling Shed/Maths Shed - please ensure your child is accessing these regularly at home. It will help to embed their spellings and improve fluency particularly with times tables.