



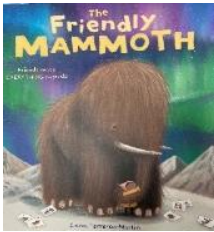
# Saint Mary's Catholic Voluntary Academy

## Valehouse Advent I Newsletter

Welcome to a brand-new school year, Valehouse! We've got a busy term ahead, so let's see what we'll be learning together this half term.

### English

During this half term, we will be exploring the following genres and texts.



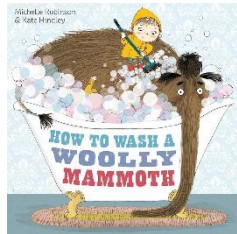
#### **Narrative writing**

We start the year sharing the text 'The Friendly Mammoth' and we will continue the story of Mansi and the mammoth's journey using drama and story-mapping to support our own

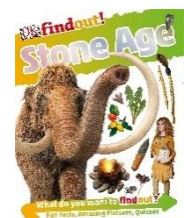
writing.

#### **Instructional Texts**

Using 'How to Wash a Woolly Mammoth' as our inspiration, the children in Valehouse will use command sentences and other features of instructional texts to write our own instructions.



#### **Informational Texts**



We will share different examples of information texts to learn how they are set out and then create our own information page about a mammoth to help Mansi

#### **Stone Age Poetry**

We will use our building vocabulary to create our own diamante poems about the Stone Age.

### Maths

Using White Rose Maths, we will be covering the following areas of learning

#### **Year Two Place Value**

- Numbers to 20
- Count objects to 100 in 10s
- Recognise tens/ones and use a place value chart
- Partition and flexibly partition numbers to 100
- Write numbers to 100 in words and in expanded form
- 10s and 1s on the number line to 100
- Estimate numbers on a number line
- Compare and order objects and numbers
- Count in 2s, 5s, 10s and 3s

#### **Year Two Addition and Subtraction**

- Number bonds to 10 and fact families within 20
- Number bonds to 100 (tens)
- Add and subtract 1s
- Add by making 10
- Add three 1-digit numbers
- Add to the next 10 and across a 10
- Subtract across 10 and from a 10

#### **Year Three Place value**

- Represent numbers to 100
- Count in 100s and use a number line to 100
- Represent and partition numbers to 1,000
- Flexible partitioning of numbers to 1,000
- Find 1, 10 or 100 more or less
- Use and estimate on a number line to 1,000
- Compare and order numbers to 1,000
- Count in 50s

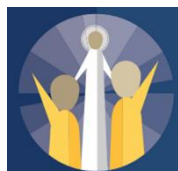
#### **Year Three Addition and Subtraction**

- Apply number bonds within 10
- Add and subtract 1s
- Add and subtract 10s
- Add and subtract 100s
- Add 1s across a 10 and 10s across a 100
- Subtract 1s across a 10

## RE

### **Catholic Social Teaching: Dignity of the Human Person**

This half term we will be exploring the theme of the dignity of the human person and how we believe every human person is made in the image and likeness of God. This is a gift that we all share as fellow human beings; we are all infinitely loved by our Creator.



### **Creation to Covenant**

Our RE Curriculum 'To Know You More Clearly' is comprised of six branches throughout the year. This half term the branch is 'Creation and Covenant'. In the first branch we will learn about the story of Creation, and how humanity, made in the image and likeness of God, is given the task of caring for the Earth. At Mass, Catholics give thanks for the fruits of the Earth at the Offertory.





# Saint Mary's Catholic Voluntary Academy

## Valehouse Advent I Newsletter

### Science - Materials: Rocks and soil

During this topic, the children will learn how to

- Define the term rock.
- Describe the appearance of different rocks, identifying both crystals and grains.
- Group rocks by their absorbency, hardness and reaction to acid rain (vinegar).
- List the different factors that break down rocks.
- Describe fossil formation and identify fossils in rocks.
- Describe the work of a palaeontologist.
- Name, describe and compare some different categories of soil.
- List some of the benefits of earthworms in soil.
- Identify and describe the comparative size and weight of the layers in a sedimentation jar.

### History

This half term we're exploring the question  
**Would you prefer to have lived in the Stone Age, Bronze Age or Iron Age?**

The children will -

- Understand that prehistory was a long time ago.
- Accurately place AD and BC on a timeline.
- Identify certainties and possibilities based on archaeological evidence.
- Explain the limitations of archaeological evidence.
- Use artefacts to make deductions about the Amesbury Archer's life.
- Explain how bronze was better than stone and how it transformed farming.
- Explain how trade increased during the Iron Age and why coins were needed.
- Identify changes and continuities between the Neolithic and Iron Age periods.
- Explain which period they would prefer to have lived in, providing evidence for their choice.

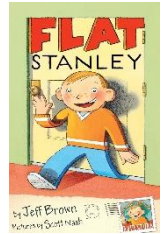


The Stonehenge monument built in 2500 BC

### Guided Reading

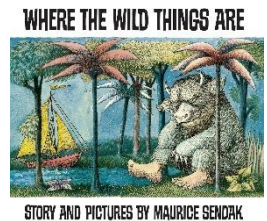
Flat Stanley by Jeff Brown

Stanley Lambchop is an ordinary boy with an extraordinary problem. One night, a giant pinboard falls on top of him leaving him completely flat. At first, Stanley enjoys the benefits of his strange predicament - it can be fun going in out of rooms simply by sliding under the door. And it's a hoot being posted to your friends in California for a holiday. But it's not always easy being different, and, once the novelty begins to wear off, Stanley wishes he could be just like everybody else again. But how will he ever fill out?



Where the Wild Things Are by Maurice Sendak

*One night Max puts on his wolf suit and makes mischief of one kind and another, so his mother calls him 'Wild Thing' and sends him to bed without his supper.*



That night a forest begins to grow in Max's room and an ocean rushes by with a boat to take Max to the place where the wild things are. Max tames the wild things and crowns himself as their king, and then **the wild rumpus begins!**

### How can you help?

Please ensure your child brings a **healthy snack** and a **bottle of water** every day. Unfortunately, the Government free fruit scheme is only open to KS1 children (Rec, Y1 and Y2) and we cannot depend on there being any left over for those children in KS2 (Years 3 to 6).

Tuck shop is open on Fridays, with a selection of treats for 50p. Alternatively, your child may bring in a cereal bar or crisps as their Friday treat.

This half term, the children in Valehouse will have OTIS on **Thursdays**, so will need to come into school in their PE Kit on that day.

Reading Diaries and reading books need to be brought into school every day, and we ask that care is taken that they are kept in a good, clean condition ready for another pupil to use. Please read with your child daily and sign their diary.

Homework is set on a Monday and is due the following Monday. Please ensure work is completed neatly and stuck in.

Spellings are tested on a Friday, and a new list is given out on Fridays. Spellings can be accessed on Spelling Shed and the children's logins are in their reading diary.

Spelling Shed/Maths Shed - please ensure your child is accessing these regularly at home. It will help to embed their spellings and improve fluency particularly with times tables.



# ***Saint Mary's Catholic Voluntary Academy***

## **Valehouse Advent I Newsletter**